

CROSSROADS VILLAGE CENTER

15150 Washington Street, Haymarket, VA 20169
Town of Haymarket



NEARBY RETAILERS:

Walmart



CVS
pharmacy



RETAIL FOR LEASE

- New development in the heart of Haymarket, VA - Delivering Q4 2019.
- Conveniently located off I-66, James Madison Hwy (Rt 15), and Washington St (Rt 55).
- Proposed Pad Sites with permissible drive-thrus available for ground lease.
- Proposed multi-tenant building with up to 8,250 SF of retail available.

Melissa Welch
mwelch@klnb.com
703-268-2704

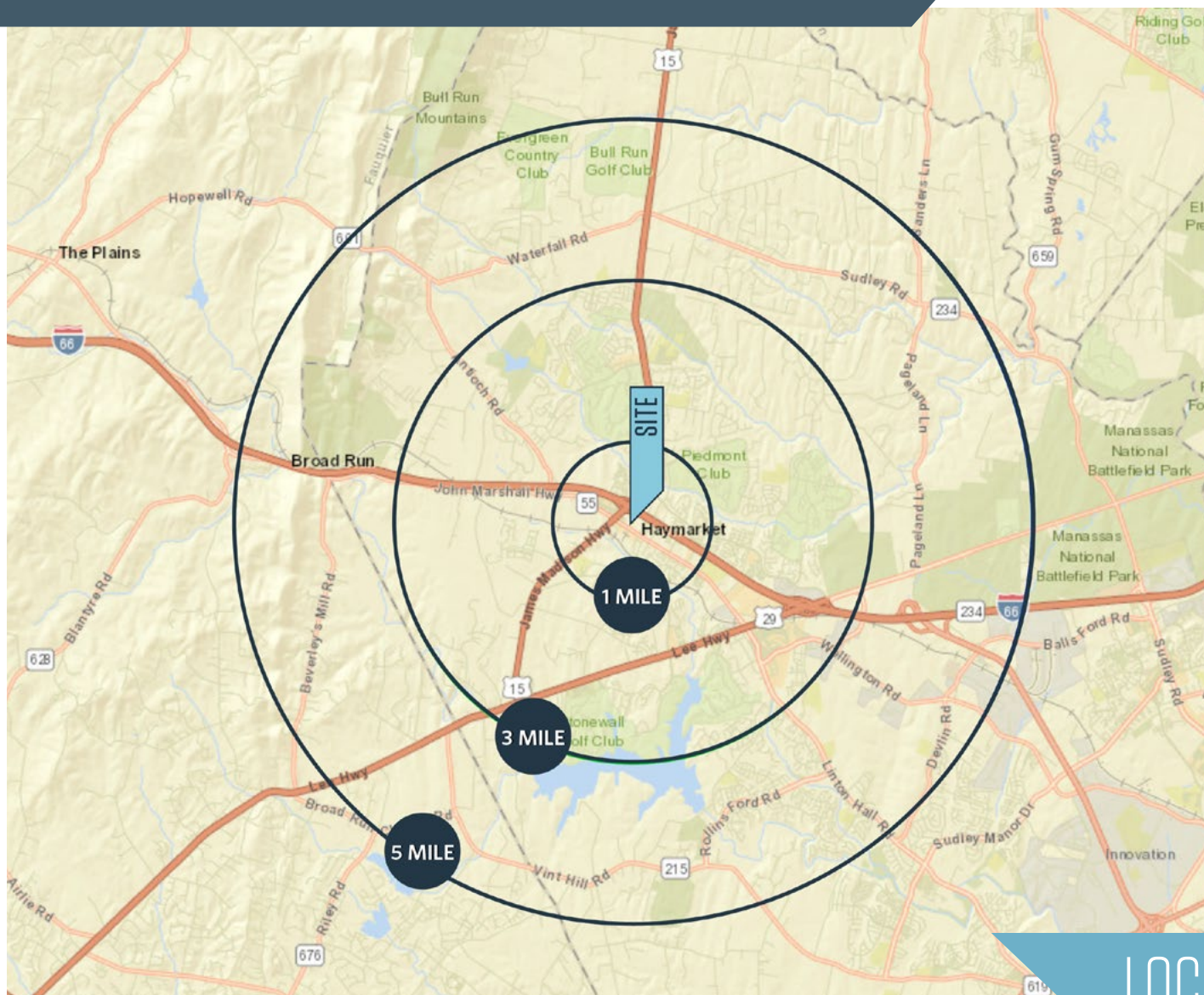
Veronica Salcido
vsalcido@klnb.com
703-268-2714

8065 Leesburg Pike, Suite 700
Tysons, VA 22182
klnb.com

klnb

CROSSROADS VILLAGE CENTER

15150 Washington Street, Haymarket, VA 20169
Town of Haymarket



DEMOGRAPHICS | 2017:

1-MILE	3-MILE	5-MILE
Population		
6,334	36,553	55,735
Daytime Population		
2,510	15,852	22,767
Households		
2,027	12,477	18,328
Average HH Income		
\$129,053	\$149,377	\$149,857

[CLICK TO DOWNLOAD DEMOGRAPHIC REPORT](#)

TRAFFIC COUNTS | 2017:

I-66	119,000ADT
Rt 15	35,000 ADT
Washington St	13,000 ADT

LOCATION & DEMOGRAPHICS

Melissa Welch
mwelch@klnb.com
703-268-2704

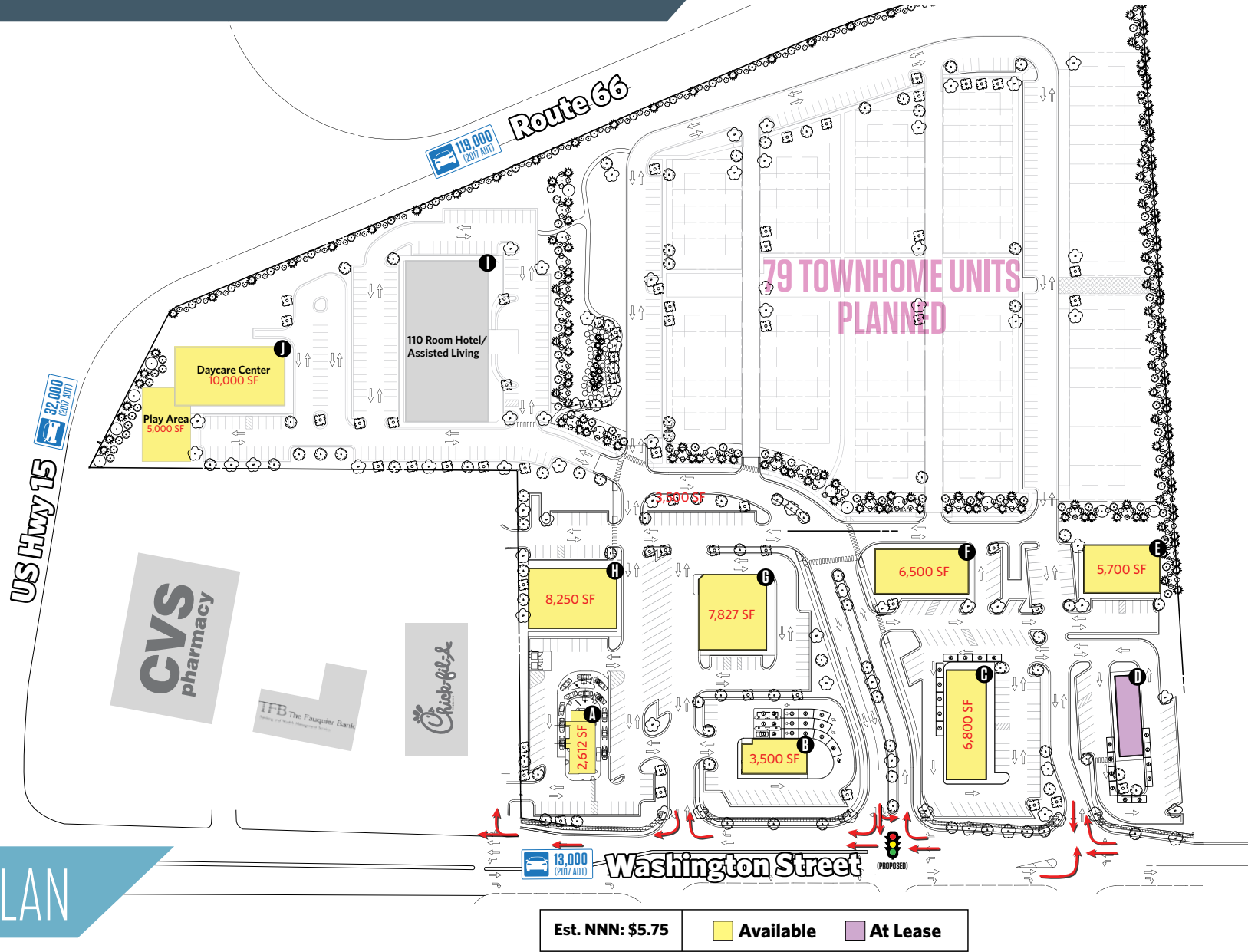
Veronica Salcido
vsalcido@klnb.com
703-268-2714

8065 Leesburg Pike, Suite 700
Tysons, VA 22182
klnb.com

klnb

CROSSROADS VILLAGE CENTER

15150 Washington Street, Haymarket, VA 20169
Town of Haymarket



SITE PLAN

Melissa Welch
mwelch@klnb.com
703-268-2704

Veronica Salcido
vsalcido@klnb.com
703-268-2714

8065 Leesburg Pike, Suite 700
Tysons, VA 22182
klnb.com

klnb

CROSSROADS VILLAGE CENTER

15150 Washington Street, Haymarket, VA 20169
Town of Haymarket



MARKET AERIAL

Melissa Welch
mwelch@klnb.com
703-268-2704

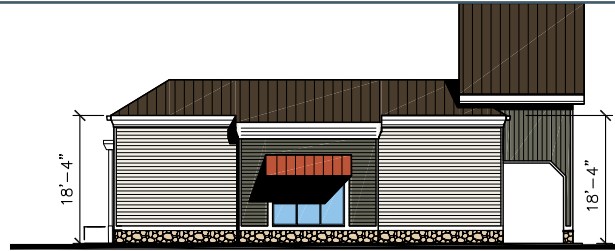
Veronica Salcido
vsalcido@klnb.com
703-268-2714

8065 Leesburg Pike, Suite 700
Tysons, VA 22182
klnb.com

klnb

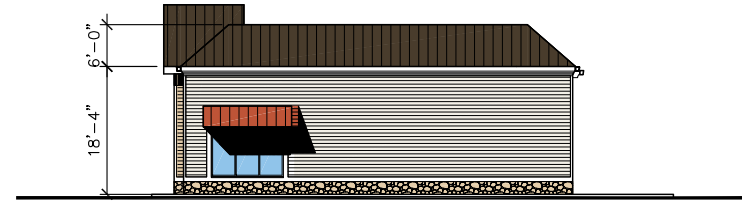
CROSSROADS AT HAYMARKET

15150 Washington Street, Haymarket, VA 20169
Town of Haymarket



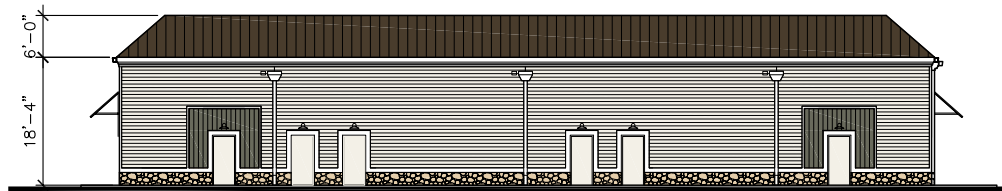
WEST ELEVATION

SCALE:1/16" = 1'-0"



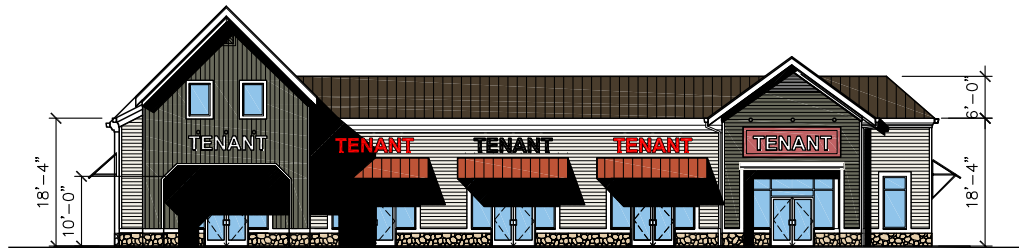
EAST ELEVATION

SCALE:1/16" = 1'-0"



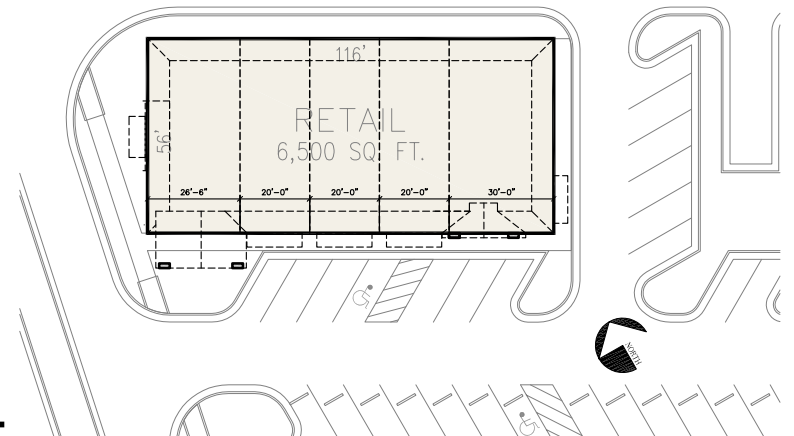
NORTH ELEVATION

SCALE:1/16" = 1'-0"



SOUTH ELEVATION

SCALE:1/16" = 1'-0"



FLOOR PLAN

SCALE:1/32" = 1'-0"

ELEVATION 1

Melissa Welch
mwelch@klnb.com
703-268-2704

Veronica Salcido
vsalcido@klnb.com
703-268-2714

8065 Leesburg Pike, Suite 700
Tysons, VA 22182
klnb.com

klnb

CROSSROADS VILLAGE CENTER

15150 Washington Street, Haymarket, VA 20169
Town of Haymarket

For More Information, Please Contact:

Melissa Welch

mwelch@klnb.com

703-268-2704

Veronica Salcido

vsalcido@klnb.com

703-268-2714

8065 Leesburg Pike, Suite 700
Tysons, VA 22182

klnb.com



facebook.com/KLNB



[@KLNBLLC](https://twitter.com/KLNBLLC)



linkedin.com/company/klnb



instagram.com/klnbllc

While we have no reason to doubt the accuracy of any of the information supplied, we cannot, and do not, guarantee its accuracy. All information should be independently verified prior to a purchase or lease of the property. We are not responsible for errors, omissions, misuse, or misinterpretation of information contained herein and make no warranty of any kind, express or implied, with respect to the property or any other matters.

The logo for klnb, featuring the letters 'klnb' in a dark blue, sans-serif font. The letter 'k' is stylized with a light blue vertical bar to its left.